

Flitwick Papers

Winter 2024



Snow covered Flitwick Wood

What's Inside...

- Skate Park Expansion
- Remembrance Parade & Service
- Bedfordshire Day
- Flitwick Library Film Club

What's On...

- Friday Nights@Rendezvous
Garage Night - Friday 10th January
- Dirty Dancing Live & Party
Saturday 15th February
- Free Community Movie Days
Monday 17th February



Flitwick Town Council

The Rufus Centre
Steppingley Road
Flitwick
Bedfordshire
MK45 1AH

Follow Us:



t: 01525 631900

e: info@flitwick.gov.uk

w: flitwick.gov.uk

HOW TO GET IN TOUCH

Your Town Councillors

Contact your Town Councillors via email: firstname.surname@flitwick.gov.uk or call using the numbers below.

Ward	Name	Contact
W	Ian Blazeby	634585
W	Tina Connell	07951 567136
W	Clare Copelstone	631900
W	Patricia Earles	07929 638404
W	Toby Harald	07739 937624
E	Howard Hodges	717778
E	Sue Livens	07804 359419
E	Tim Parsons	07754 663986
W	Fraser Patterson	631900
W	Martin Platt	713017
E	John Roberts	716360
W	Andy Snape	07590 572440
W	Dan Toinko	649992
E	Clare Thompson	07734 866479
W	Robert Wilsmore	712139

Central Bedfordshire Councillors

Ian Adams	0300 300 8512
Gareth Mackey	712537
Heather Townsend	0300 300 8522

Flitwick Papers is published by Flitwick Town Council on a quarterly basis. The next edition will be Spring 2025 which will be distributed in March.

To share your news and events in Flitwick Papers call **01525 631900** or email beverleyjones@flitwick.gov.uk

Contact Flitwick Town Council:

- Allotments
- Burial Ground
- Community Hub
- Environmental Improvements
- Events and Activities
- Hub Car Park
- Job Club
- Manor Park
- Nature Park
- Play Areas, Parks & Open Spaces
- The Rufus Centre
- The Rendezvous Café & Bar
- The Hub
- Youth Hub

Call: **01525 631900**

Email: info@flitwick.gov.uk

Contact Central Bedfordshire Council:

- Archives
- Amenity Areas
- Education
- Environmental Services
- Grants
- Grass Cutting
- Highways
- Industrial Estates
- Libraries
- Litter Clearance
- Planning
- Recreation & Leisure
- Refuse Collections
- Recycling
- Social Services
- Street Lighting
- Trading Standards
- Traffic Management
- Youth Services

Call: 0300 300 8000

Hi everyone and a warm welcome to the Winter edition of Flitwick Papers!

It has been a busy autumn with many civic and community events hosted. The largest of these has been the Remembrance Day Parade & Service, which attracted more people than ever this year, including many young people. It was a privilege to lay a wreath on behalf of the residents of Flitwick in tribute to those who made the ultimate sacrifice.



The Community Services Team held free pumpkin carving sessions at The Hub during October half term for the younger members of our community. It was a pleasure to judge everyone's efforts and, in what was a very close competition, award first prize to Diar.

A big thank you to everyone for taking part and congratulations to all the winners. Also, another big thank you to Tesco for donating the pumpkins and prizes.

Other events I have attended include the Town Mayor's Charity Quiz, which raised £960.00 (thank you to those who attended and helped organise the event), the charity Respite at Home Volunteers Silver Jubilee AGM, Ampthill Cancer Group, a Celebration of Youth & Trafalgar Day at St Albans Cathedral where the Flitwick and Ampthill Sea Cadets marched, and Oakfield Gardens Crematorium dedication (Flitwick).

In other news, I am sure many of you will have noticed work to replace the roof of 3 Station Road (formerly Barclays Bank) has been taking place as construction work for Flitwick Town Council's (FTC) flagship project begins. We will, of course, continue to keep you updated on progress.

I am delighted that the Town Mayor's Charity is holding, together with support from Waitrose Ampthill and Flitwick Club, free Inflatable Pool Party & Pizza sessions in December for young people.

There are lots of popular events coming up over the Christmas holidays, and I'm looking forward to hosting another Town Mayor's Quiz Night on 28th March. Tickets are now available to book; see page 9!

On behalf of the Councillors and Staff at Flitwick Town Council, I wish you all a very Merry Christmas and Best Wishes for the New Year.

**Cllr John Roberts
Town Mayor**

Christmas Lights Switch On

As this edition was going to press final preparations were being made for the Christmas Lights Switch On taking place on Sunday 24th November from 3pm.

The stunning Christmas Tree is set to take centre stage in Flitwick Town Square as the countdown to lighting up the town at 5pm begins.

We're looking forward to singing carols around the Christmas Tree and enjoying the festive atmosphere with street entertainment, fun fair and stalls, plus, of course, a visit from Santa himself. Rumour has it that the Naughty Elf and the Grinch will be back too, up to their normal tricks!



Meetings Calendar

December

3rd	Community Services
10th	Business
17th	Town Council

2025

Meeting dates for 2025 are currently being finalised. To check the meetings calendar please visit www.flitwick.gov.uk or call **01525 631900**.

Agendas for all meetings are displayed on the noticeboards across the town. You can also view agendas and supporting papers on our website.

Residents are welcome to attend any meetings in person or remotely via Teams. There is always an opportunity for residents to speak under the Public Open Forum at each meeting.

Meetings start at 7.45pm

View the full meetings
calendar at

www.flitwick.gov.uk



Everyone is welcome to attend meetings

Joining instructions can be found on
the meeting agenda or contact:

staciLOCKEY@flitwick.gov.uk

Skate Park Expansion

Flitwick Skate Park is set to be transformed thanks to a successful application for funding from the UK government through the UK Shared Prosperity Fund administered by Central Bedfordshire Council.

A total of £38,400 has been received from the fund, with the Town Council match funding an additional £9,600 for the project.

The project will see the Skate Park extended with new features including a blended quarter pipe, berm corner, and a whippy quarter with embedded pump bump.



Funded by
UK Government

Specialist designers Gravity Skateparks will be delivering the project. Work will be completed by the end of the year.

Stop Press!

In addition to the exciting Skate Park extension, the Town Council has also secured Section 106 funding to concrete the area along the top of the bowl.

This development will really enhance the facility, particularly for the more experienced users of the park. The project cost of £26,500 is fully funded and will take place at the same time as the new extension.

The work is due to start at the beginning of December.

"We are delighted to have been awarded this funding to develop this popular community asset in Millennium Park," said Town Mayor, Cllr John Roberts.

"The Council is committed to investing in better facilities, services and events for young people and this exciting project will make a real difference to everyone who uses the Skate Park."



Social Media

Keep up to date

with Council news promote people to follow Facebook and Instagram to keep up to date with what is going on



Remembrance Parade & Service



It was fantastic to see so many people attend the Remembrance Parade & Service at the War Memorial at Flitwick Town Square and come together to remember those who served and made the ultimate sacrifice for us all. Members of the Royal British Legion, uniformed cadets, local groups and organisations were led by the Ampt Hill Town Band as they paraded up Station Road to the War Memorial.

If you were unable to attend you can view the video on our Facebook page.

Thank you to everyone who took part and for making the afternoon such a success.



Station Road Update

The first step in transforming 3 Station Road (former Barclays Bank building) is now complete. Although you won't notice any visible changes from the ground, the roof has been replaced to ensure the building is watertight and energy efficient. The project was funded by the UK government's Community Ownership fund.

The Town Council's plan is to develop the building into a casual dining restaurant and a retail space with an aspiration to include a Post Office counter, to open in 2025.

We will continue to keep you updated on social media and in Flitwick Papers.



Happy Bedfordshire Day!

We will be flying the Bedfordshire flag at The Rufus Centre on **Thursday 28th November** to celebrate Bedfordshire Day.

Bedfordshire Day celebrates the history, culture and community of the county and is marked on this date as it is the anniversary of the birth of John Bunyan.

The colourful flag includes three escallops on a black vertical stripe, taken from the coat of arms of the Duke of Bedford, and blue and white wavy lines representing the River Great Ouse which flows through the county.

If you would like to know more about Bedfordshire Day, please visit the Friends of Bedfordshire Society Facebook page.



Halloween Pumpkin Carving

We had great fun celebrating Halloween this year with two free pumpkin carving sessions at The Hub during the October half term.

All the pumpkins were kindly donated by Tesco Flitwick who also provided prizes for the 'Best Carved Pumpkin' competition.

At the Wednesday session we were delighted to be joined by Lyn and Mary from the store, who were kept busy helping visitors carve their pumpkins.

We were really impressed with all the different designs!



Stitchers Group

The Stitchers Group have been working their magic creating beautiful items for the local community.

Most recently the group produced a selection of gloves, blankets, hats and other items for Carers in Bedfordshire's 20th Anniversary Conference in October.

The Stitchers meet every **Wednesday morning** at The Rufus Centre from **10am to 12 noon**. Everyone welcome.

If you can't make the Wednesday meeting, you still help create items for community projects. Why not come along to the next Big Knit at the Village Hall on **Friday 31st January** to find out what projects we are working on.



 **THE BIG KNIT 2025**

Flitwick Village Hall
9.30am - 11.30pm

-  **FRIDAY 31ST JANUARY**
-  **FRIDAY 25TH APRIL**
-  **FRIDAY 29TH AUGUST**
-  **FRIDAY 29TH NOVEMBER**

Local volunteers work with various charities and organisations across the area to help the local community

Donations of wool gratefully received

To find out more or support our current projects please contact Zoe on the details below

Get in contact with
COMMUNITY SERVICES OFFICER ZOE
zoeputwain@flitwick.gov.uk
01525 631900

If you missed the Town Mayor's Charity Quiz Night in October, you'll be pleased to know that tickets are now on sale for the next quiz night in March.

It's a great night out with a delicious fish and chips supper served before the quiz begins. Congratulations to October's winning quiz team, 'Reserved'.

 We raised a fantastic £960 for this year's chosen charities Keech Hospice Care and the Flitwick Town Mayor's Community Fund. We're looking forward to doing it all again next year!



Quiz Night

£15* per person

Teams of up to 6

In aid of

Flitwick Town Mayor's Charity CIO

&

Keech Hospice Care

FRIDAY 28th March 2025

CHOICE OF FOOD INCLUDED IN TICKET PRICE:

FISH & CHIPS OR BATTERED SAUSAGE & CHIPS

OR VEGGIE BURGER & CHIPS

ALL SERVED WITH CURRY SAUCE & MUSHY PEAS

DOORS OPEN: 6.00pm FOOD SERVED: 6.30pm

FOLLOWED BY THE QUIZ

LICENSED BAR AVAILABLE

THE RUFUS CENTRE
FLITWICK, MK45 1AH

BOOK VIA TICKETSOLVE*
(*BOOKING FEE APPLIES)



(Flitwick Town Mayor's Charity CIO - Charity Number 1205683 / Keech Hospice Care - Charity Number 1035089)

Christmas at the library

Jingle all the way to Flitwick Library this December, maybe you can take part in a workshop to remember!

Get creative in all our festive fun, tickets are limited so be the first one!

We have things for all ages and creativity skills, with mince pies and mulled wine to warm up in the chills.

So pop to the library and book your space, we can't wait to put a festive smile on your face!

Adults:

Table Centerpiece workshop

Using greenery, feathers and snowballs make a truly festive wreath centerpiece for your table this Christmas!

Tuesday 3rd Dec

2pm-4pm

£26

Book your space online or at the library



Needle Felting Gnomes workshop

Get creative with our needle felting workshop and make a decoration like 'gnome' other!

Friday 6th Dec

2pm

£20

Get your tickets online at www.soverycrafty.co.uk



Block Printing Tote Bag workshop

Use block printing techniques to create a unique and wonderful tote bag of your own! Keep for yourself or give it as a gift!

Friday 6th Dec

6:30pm

£25

Get your tickets online at www.soverycrafty.co.uk



Christmas Bottle Painting workshop

Join us for an evening of festive bottle painting, drinking mulled wine and munching on mince pies! Create your very own winter scene on a glass bottle, complete with twinkling fairy lights!

Friday 13th Dec

3-5:30pm & 6:30pm-8:30pm

£20



Children:

Christmas card making workshop

Pop down to Flitwick library and make your very own Christmas cards in our amazing workshop!

Wednesday 11th Dec

4-5:30pm

Free

Book your space at the library



Concert Club - toddler show

Join the Concert Club Cello and Violin duet for a morning of nursery rhymes, music and a sprinkle of Christmas!

Wednesday 18th Dec

10:30am

£6 for child ticket additional £2

Book your space online

www.ticketsource.co.uk/concertclub



Concert Club - afterschool show

Come and listen to the Concert Club Cello and Violin duet playing your favourite well known songs, themes from the movies and a hint of Christmas magic!

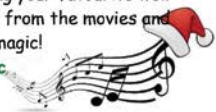
Wednesday 18th Dec

4pm

£5 (babies free)

Book your space online

www.ticketsource.co.uk/concertclub



New Year memory box workshop

Pop to the library for New Year's eve and build your very own 2025 keepsake box! After you've built it, get decorating and fill it with memories throughout 2025!

Tuesday 31st December

10:30am-12:30noon

Free

Book your space at the library



COMING UP IN 2025!

- Valentines workshop
- Mother's day arrangement workshop - 29th March with Jenny from Hillside Market

If you have any queries of these events or clubs please call the Library on 0300 300 8057 or email

Flitwick.Library@centralbedfordshire.gov.uk (All tickets must be purchased in advance)





CHRISTMAS AT ST PETER & ST PAUL CHURCH ROAD, FLITWICK

Tuesday 17th December - 'Beer & Carols' - The Swan Pub, Flitwick
Come, grab a drink and sing some carols with us at 7.30pm

Sunday 22nd December - 'O come all ye Faithful - Carols at Christmas'
our candlelit carol service at 6.30pm

Tuesday 24th December - Christingle Services
for all ages at 4pm & 6pm

Tuesday 24th December - Midnight Mass
traditional communion service at 11.30pm

Wednesday 25th December - Christmas Day Service
All Together Service at 10.30am

For more details visit. www.flitwickchurch.org/christmas

Christmas Fun at The Hub

The Hub has many Christmas activities planned in the run-up to Christmas at both the regular Youth Club on Mondays for children in school years 5 & 6 and the Open Access Youth Drop-In (11-16 years) on Tuesdays. The last session of 2024 will be on **Tuesday 17th December**.

The team will be taking a break over the festive period and will open again on **6th January 2025**. Follow The Hub's Facebook page for all the latest news.



Free Inflatable Pool Parties

Come and have fun at one of our free Inflatable Pool & Pizza parties this December at Flitwick Leisure Centre. Funded by the Town Mayor's Charity with generous support from Waitrose Amptill and Flitwick Club, we have two free sessions at Flitwick Leisure Centre, including one session specially organised for SEND children.

***FREE EVENT**

Inflatable POOL PARTY & PIZZA

FLITWICK LEISURE CENTRE
STEPPINGLEY ROAD, FLITWICK,
MK45 1TH

CHILDREN AGED 8 TO 16 YEARS

14TH DECEMBER - OPEN TO ALL

5:00 PM - 7:00 PM

*BOOKING REQUIRED

FUNDED BY THE FLITWICK TOWN MAYOR'S CHARITY WITH SUPPORT FROM WAITROSE AMPHILL & FLITWICK CLUB

KINDLY SUPPORTED BY

even one active

*£5 DEPOSIT IS REQUIRED AT THE TIME OF BOOKING. THIS WILL BE REFUNDED IN FULL AFTER ATTENDANCE (WITHIN 7-10 WORKING DAYS).

BOOK YOUR FREE PLACE

USE THE QR CODE OR VISIT

rufuscentre.ticket solve.com

***FREE EVENT**

Inflatable POOL PARTY & PIZZA

FLITWICK LEISURE CENTRE
STEPPINGLEY ROAD, FLITWICK,
MK45 1TH

CHILDREN AGED 8 TO 16 YEARS (ADULT SUPERVISION REQUIRED)

7TH DECEMBER - SEND ONLY

5:00 PM - 7:00 PM

*BOOKING REQUIRED

FUNDED BY THE FLITWICK TOWN MAYOR'S CHARITY WITH SUPPORT FROM WAITROSE AMPHILL & FLITWICK CLUB

KINDLY SUPPORTED BY

even one active

*£5 DEPOSIT IS REQUIRED AT THE TIME OF BOOKING. THIS WILL BE REFUNDED IN FULL AFTER ATTENDANCE (WITHIN 7-10 WORKING DAYS).

Movie Day Magic

Looking ahead to February half term, the free Community Movie Day is already in the diary for **Monday 17th February**. Tickets are available to book online now.

Flitwick Town Council

Free Community

MOVIE DAY

Monday 17th February 2025

The Rufus Centre, Flitwick

FREE EVENT!

Film Showings:
Minions - The Rise of Gru (PG) 11am
Kung Fu Panda 4 (PG) 2pm

Scan to book free tickets or visit therufuscentre.ticket solve.com

Please note: Under 14s must be accompanied by an adult

DIRTY DANCING LIVE

& Party!

HAVE THE TIME OF YOUR LIFE!

SATURDAY
15TH FEBRUARY
7.30PM
SHOW STARTS 8PM



LICENSED BAR, OVER 18S ONLY

TICKETS: £15

BOOK ONLINE*

THERUFUSCENTRE.TICKETSOLVE.COM



*BOOKING FEE APPLIES

THE RUFUS CENTRE
FLITWICK
MK45 1AH



Organised by Flitwick Town Council

For more information: 01525 631900 or events@flitwick.gov.uk

X @NewsFTC f /flitwickTC i /flitwicktowncouncil www.flitwick.gov.uk

Have you considered respite or short break care?

For your loved one as an alternative to a care home?

Home Instead is the UK's leading provider of care in the home. Our respite care can provide a much-needed lifeline for families that otherwise would have to move loved ones to a care home environment.

Benefits of staying in your own home are:

- Ⓜ Respite allows loved ones to stay in surroundings where they feel safe and comfortable minimising confusion within unfamiliar environment
- Ⓜ Flexible to suit your needs - respite can be temporary or intermittent service levels
- Ⓜ Allows loved ones to remain independent
- Ⓜ Comfort & peace of mind knowing your loved one is spending time with another caring individual
- Ⓜ Avoids carer exhaustion and gives time to look after yourself
- Ⓜ Maintain contact with familiar visitors to the home

Suitable for

- Returning home from a hospital stay
- Dementia care
- Frailty
- Family absence

Call us today to see how we can help

Home Instead Luton & Central Bedfordshire
T: 01582 742275 E: luton@homeinstead.co.uk
W: homeinstead.co.uk/luton-bedfordshire



Rated by homecare.co.uk

 **Home Instead.**
To us, it's personal

The Planning Improvement Working Group Needs You!



We're looking for residents to volunteer to join our Planning Improvement Working Group (PIWG) and work together with Town Councillors to influence the future development of the town.

The Town Council's role in the planning process is to represent the wider community and comment on planning applications as a consultee. Central Bedfordshire Council (CBC) is the planning authority.

For sites that have already been allocated for development in CBC's Local Plan, it is likely that the development will proceed. In these cases, it is essential to ensure that the best possible outcomes can be negotiated for the town.

Flitwick now has its very own Film Club thanks to a £5,000 grant received from the UK government through the UK Shared Prosperity Fund (UKSPF). This is part of the UKSPF cultural funding received by the Town Council, with the remaining amount allocated to the 'Flitwick: A Living History' project.

With the nearest cinemas in Bedford, Luton and Milton Keynes, it will be a real benefit for residents to be able to watch a film on the big screen at a more affordable cost in the town rather than have to travel further afield.

PIWG was formed two years ago, with the aim of engaging with CBC, residents, and developers to try to influence plans before they reach an advanced stage. By working together, the group aim to ensure the community gets the maximum benefit from any planned development.

Being a member of PIWG will involve some time commitment on your part, but you will be working with a group committed to making a difference to Flitwick.

You can find out about the Town Council's role in the planning process and view all planning applications in Flitwick on our website www.flitwick.gov.uk. You can also read the results of the first Planning Survey conducted earlier this year.

If you would like to know more about joining PIWG, please contact us at info@flitwick.gov.uk 01525 631900

Flitwick Library Film Club

The Flitwick Library Film Club will be showing films on **Fridays and Saturdays** once a month with a choice of movies to suit all ages.

See page 21 for details of the films showing in November, December and January next year! Tickets are available to book from Flitwick Library.



Funded by
UK Government

Film Friday / Cinema Saturday
Flitwick Library



PRESENTS

*Do you hear the
people sing?*

JOIN US FOR A SHOWCASE OF MUSICAL THEATRE
FEATURING LIVE PIANO WITH HOSTS
ALEXA VOX & GAVIN ASHLEY-COOPER

AUDIENCE PARTICIPATION WELCOME!

YOUR CHANCE TO PERFORM OR SIT BACK AND ENJOY THE SHOW!

THE RUFUS CENTRE,
FLITWICK MK45 1AH

FRIDAY 21ST FEBRUARY
DOORS 7:00PM

TICKETS £10*

BOOK ONLINE

THERUFUSCENTRE.TICKETSOLVE.COM



*BOOKING FEE APPLIES

LICENSED BAR, OVER 18S ONLY



Working in partnership



*Working towards strengthening
communities
that truly embrace LGBTQ+ people.
For more information call 01525 631900*

It's been a busy time for the Community Fridge, with more visitors than ever as demand for our services continues to grow. Each month, over 4,000kg of surplus fresh food is redistributed, saving food from landfill and helping people with the cost-of-living crisis.

Our new dedicated Food Hub located at the side of The Rufus Centre has made a huge difference to how we operate, and thanks to an incredibly generous £2,000 donation from a local business (who wishes to remain anonymous) we have been able to upgrade our remaining domestic fridge and freezer to larger commercial units, with so much more fridge and freezer space.

Our opening times have been adapted in response to your feedback: we're now open **Monday to Friday, 09:30-11:30 and 14:30-17:30, and 09:30-11:30 on Saturdays**. Opening earlier in the afternoon allows parents to visit before schools finish and means people can avoid being out in the dark now that the clocks have gone back and it's dark by 4pm!

Welcome to the Team

We're delighted to welcome Natalie, our new Community Services Assistant, to the Community Fridge Team. Natalie will be working with our fantastic team of volunteers and local supermarkets to ensure we continue to offer the best service possible.



We're looking for more people to join our volunteer team to help with weeknight collections from Flitwick Tesco and Co-op stores. You'll need your own vehicle (we cover mileage costs) and be able to lift trays of food weighing between 5kg and 20kg. Please get in touch if you would like to know more.



Christmas Opening Times

We expect to be busy in the lead-up to the Christmas period. On Christmas Eve, we plan to open early evening to redistribute whatever food is left in our local supermarkets at closing time - we are expecting there to be a lot of great food available! The timings are still being confirmed, so keep an eye on our Facebook page nearer the time; if you don't have access to social media, you can call the Town Council offices on **01525 631900** to check or email communityservices@flitwick.gov.uk

The Community Fridge will be closed on Christmas Day, Boxing Day, and New Year's Day but will be open as normal on other days over the festive period.

If you've not visited us already, pop down to our Food Hub to find out what it's all about! Our team at the Community Fridge wish you a Merry Christmas and a Happy New Year.

**FLITWICK
COMMUNITY
FRIDGE**

Opening Times:
Saturdays 9:30am to 11:30am
Monday to Friday 9:30am to 11:30am
and 2.30pm to 5.30pm

Community Group Talks

Would you like a Safer Communities Officer to visit your group?

We can deliver informative talks on a range of topics including:

- scam awareness
- keeping safe at home and in the community
- staying safe online
- building a stronger and safer neighbourhood



We want to hear your views, let us know of any issues in your local area and how we can help to resolve them.

Call us on 0300 300 8301 or email community.safety@centralbedfordshire.gov.uk



We'd love you to celebrate Christmas with us!

The Bible says that the birth of Jesus is good news that brings great joy. Join us at our Christmas services where you can find out why.

Sunday 1st December, 10:30am
Christingle Service

Sunday 15th December, 6:00pm
Contemporary Carols

Sunday 22nd December, 10:30am
Pop-up Nativity Service

Sunday 22nd December, 6:00pm
Carols by Candlelight

Christmas Eve, 6:00pm
Carols in the Town Square

Christmas Day, 10:30am
Christmas Celebration



www.kingschurchflitwick.co.uk
King's Church, Kings Road, Flitwick

Wildlife Walks & Talks

Monday 27th January 2025, 7.30pm
Maulden Church Hall, £4 per adult

The Future of Nature Conservation*. A talk by Brian Eversham, Chief Executive of the Wildlife Trust for Beds, Cams & Northants.

There will be several topics covered during this talk: Climate crisis; extinction crisis; the role and diverse meanings of 'rewilding'. Why management matters; how to prevent extinction whilst building future landscapes and habitats. New legislation supporting better conservation; wildlife winners – species likely to benefit in the future and the Wildlife Trusts' vision for the future.

Brian's talks are always hugely interesting and thought-provoking – don't miss this one!

Contact Ann by email flitvale.info@gmail.com

Text or phone to reserve your place

075801 78889



Wildlife Trust for
Beds, Cams
& Northants
Flit Vale Local Group

STALL HOLDERS WANTED

JOIN US FOR A

CHRISTMAS

Sunday Market

15TH DEC 10-3PM

Flitwick Village Hall
Dunstable Road
Flitwick MK45 1HP

GIFTS • CRAFTS • FOOD & more

FREE ENTRY!

PLANTS & XMAS WREATHS, FOOD, GIFTS, BEAUTY, LADIES FASHION & ACCS, BABYWEAR, BATH BOMBS CAKES, POP-UP CAFE & LOTS MORE STALLS

Email: shoppingfestevents@outlook.com

Recycle your Christmas Tree for Charity

National healthcare charity Sue Ryder is inviting residents to participate in their Christmas Treecycling scheme to help raise essential funds for families in need of palliative and bereavement care.

For a suggested optional donation, the charity will collect real Christmas trees directly from your front door, garden, or driveway and recycle them.

As part of Christmas Treecycling, residents in and around Bedfordshire including Flitwick postcode MK45 can have their trees collected between 9th-12th January 2025.

Registrations for booking tree collections is open until midnight on **5th January 2025** via www.sueryder.org/treebedfordshire.

For more information contact the fundraising team on **01767 642412** or email: stjohns.events@sueryder.org





Join us at girlguiding.org.uk

Flitwick Girlguiding offers lots of fun and exciting opportunities for girls to make new friends, learn new skills and help their community.

Rainbows	Brownies	Guides	Rangers
			
Aged 4-7 years	Aged 7-10 years	Aged 10-14 years	Aged 14-18 years

Your Awesome. Pass It On! Become a Volunteer!

Let's hear what the girls and volunteers love about Girlguiding:

- 

I love Guides as it is inclusive no matter your race, religion or disability.
Guide from 1st Flitwick Guides
- 

Brownies is very fun. We get to play games, do crafts and do cooking.
Brownie from 1st Flitwick Brownies
- 

I love Girlguiding as I like teaching the girls life skills and watching them build confidence and develop into a young woman.
Volunteer from 1st Flitwick Guides
- 

I love being a Ranger as we get to make new friends and have adventures.
Ranger from Flitwick Rangers
- 

My favourite experience with Guides is going on camps, trips and an International Experience to Disneyland Paris.
Guide from 1st Flitwick Guides

Great British Spring Clean 2025

Spring may seem a long way off at the moment but we are already thinking ahead to next year's Great British Spring Clean campaign.

The first Flitwick Litter Pick of 2025 has been organised as part of The Great British Spring Clean, the nation's biggest mass-action environmental campaign.

Everyone is welcome. We'll be meeting at the side of the Scout Hall. Refreshments will be provided by Flitwick Scouts during the morning.

The Great British Spring Clean and Great Big School Clean 2025 takes place from the 21st March to 6th April. For more information visit www.keepbritaintidy.org

Flitwick Litter Pick

Join the local community in helping to make Flitwick a cleaner town

Meet at the side of the scout hall
All equipment provided

Sunday 23rd March 10 am - 12 noon
Station Road Green Space



Living History

It's been a busy few months for the exciting Flitwick Living History project with a recruitment drive for volunteers at Flitwick Library and the first training session for the oral history volunteers at The Rufus Centre.

Training on the process and practicalities of recording oral histories was delivered by a member of the Oral History Society in October, and we'll soon be looking for residents to share their stories with us to include on the Flitwick Living History website set to be launched in the Spring.

The Flitwick Living History project is supported by Flitwick Town Council in partnership with Central Bedfordshire Council and the University of Bedfordshire. Earlier this year, it was awarded £24,500 from the UK government through the UK Shared Prosperity Fund (UKSPF).

If you want to know more about the project or get involved as a volunteer, email flh@flitwick.gov.uk

**NEW WEBSITE
COMING SPRING 2025**

FLH
a
**Flitwick
A Living History**

**- Images, Video, Audio
- Your stories & memories**

Interested in:

- PROVIDING CONTENT
- WRITING CONTENT - UPLOADING STORIES
- APPROVING CONTENT
- TRAINING TO RECORD ORAL HISTORY

If so, e-mail : flh@flitwick.gov.uk

Flitwick Library Film Club

Flitwick Library have started a new film club! We have films for all ages!
Come and watch some favourites on the big screen! Book your space at the library!

- Adults £5 - Children £3.50 - Family ticket (2 adult 2 children) £15 - Concessions £3.50 -

Friday showings

Friday 15th November

10:30am



Kung Fu Panda 4

Friday 20th December

2:30pm



It's a Wonderful Life

Friday 10th January

2:30pm



Singing In The Rain

Saturday showings

Saturday 16th November

10:30am



Despicable Me 4

Saturday 21st December

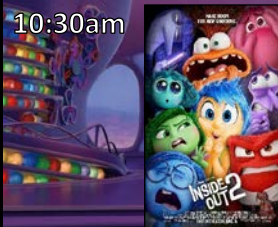
10:30am



The Grinch

Saturday 11th January

10:30am



Inside Out 2 (relaxed showing)



Greensand
Community
Energy



We're working together to help you
keep warm, save energy and save
money.

BORROW A THERMAL IMAGING CAMERA TO HELP KEEP HEAT IN YOUR HOME!

Share: Flitwick and Ampthill have added Thermal Imaging Cameras to the Library of Things. They are available to borrow at low cost via a waiting list. Find out more at www.shareflitwickandampthill.org and sign onto the waiting list on the website, or via the QR code here:

Book a home visit from **Greensand Community Energy's Energy Champions** and qualify for free membership of the Library of Things and free Thermal Imaging Camera loan.

Energy Champions are local volunteers trained to help you with sensible, tested impartial advice on saving energy in the home.



Energy Champions can give advice on

- Energy tariffs
- Heat loss in the home
- Easy tips and tricks to bring down energy bills
- Setting up your heating controls
- Grants for energy efficiency
- Scam awareness



Energy Champions can also help you use a Thermal Imaging Camera to identify heat loss problems.

Email jane.hooper@greensandenergy.org to book an **Energy Champion** home visit.

www.shareflitwickandampthill.org Registered Charity No 1198511

www.greensandenergy.org Community Benefit Society Registration No 9108

The Energy Champions Scheme is funded by





Rebecca L Faret
Solicitors

Your local friendly and approachable solicitors

Private Client

Wills, Probate, Lasting Powers of Attorney, Declaration of Trust, Court of Protection

Conveyancing

House Sales and Purchases, Equity Release, Transfers of Equity, First Registration

Family and Matrimonial

Divorce, Separation, Children Matters, Finances, Pre-Nuptial and Cohabitation Agreements

Business and Employment

Commercial Leases, Sale of Businesses, Debt Collection, Settlement Agreements

01525 712112 | rlfaret.co.uk

1 The Avenue, Flitwick, Bedfordshire, MK45 1BP

Did you know The Rufus Centre has office space available to rent?

The offices are fully serviced with allocated car parking space and ample free car parking for visitors. As a tenant, you also benefit from discounts on meeting room hire and at the Rendezvous Café & Bar.



If you are looking for new office space for your business, please get in touch

We've had a great response to the Rendezvous Café menu we introduced in September. The menu features a mix of new dishes and all-time favourites, such as jacket potatoes with a choice of fillings. Perfect winter warmers - especially when topped with chilli!



The Café prides itself on using locally sourced products and has a loyal following of repeat customers including current English Middleweight Champion, Linus



Udofia, who has relocated to Flitwick. Linus visited recently with his winning title belt and caught up with Town Mayor, Cllr John Roberts.

We love to know what our customers think of the new menu so please share your feedback with us and help us shape what we offer in the Café.

2025 Upcoming Events

10th Jan	Garage Night
18th Jan	The Soul Man
15th Feb	Dirty Dancing Live & Party
21st Feb	Show Tunes Singalong
28th March	Quiz Night with Fish & Chips
12th April	Glamour Girls Drag Show
3rd May	Style! Taylor Swift Tribute

HOW TO BOOK

Ticketsolve is in place for all our events.

Scan the QR code to view and book all the events on sale.

bookings@therufuscentre.co.uk

www.therufuscentre.co.uk

 01525 631905 

Looking for the Perfect Christmas Gift? We may well have the answer!

Introducing the new Rufus Centre Gift Voucher. A thoughtful gift that's ideal for Christmas, as well as birthdays and other celebrations.



If you're unsure if the person you're buying a gift for would enjoy the Taylor Swift Style Tribute or dancing to The Soul Man, the new gift voucher allows the recipient to choose their favourite. The perfect present for any occasion.

You can purchase vouchers in multiples of £10 and £20, redeemable for any of our events. Buy online by visiting therufucentre.ticketsolve.com or scan the QR code on page 24 to order gift vouchers and browse all the exciting upcoming events.

If you think food is more their thing, how about a Rendezvous Café Gift Card? Let them choose from their favourite breakfast to a delicious lunch or a speciality coffee and homemade cake.

You can buy the Rendezvous Gift Cards online or in the Café.

That's Christmas presents sorted for the person you don't know what to buy!



Style
A TAYLOR SWIFT TRIBUTE

Saturday 3rd May
Show 1 3-5pm
Show 2 7-9pm

Doors open 1 hour before the Show!

TICKETS: £20*

THE RUFUS CENTRE
FLITWICK,
MK45 1AH

BOOK ONLINE
THERUFUSCENTRE.TICKETSOLVE.COM

BEST DRESSED COMPETITION
GLITTER TATTOOS & GLOW STICKS INCLUDED IN TICKET PRICE!

Organised by Flitwick Town Council

For more information: 01525 631900 or events@flitwick.gov.uk

[@NewsFTC](https://www.facebook.com/NewsFTC) [/flitwickTC](https://www.facebook.com/flitwickTC) [/flitwicktowncouncil](https://www.facebook.com/flitwicktowncouncil) www.flitwick.gov.uk

THE INTERNATIONAL
GLAMOUR
Girls
DRAG SHOW

SATURDAY
12th April
7.30pm
Show starts 8pm

LICENSED BAR
OVER 18S ONLY

TICKETS: £18*

THE RUFUS CENTRE
FLITWICK, MK45 1AH

BOOK ONLINE
THERUFUSCENTRE.TICKETSOLVE.COM

Organised by Flitwick Town Council

For more information: 01525 631900 or events@flitwick.gov.uk

[@NewsFTC](https://www.facebook.com/NewsFTC) [/flitwickTC](https://www.facebook.com/flitwickTC) [/flitwicktowncouncil](https://www.facebook.com/flitwicktowncouncil) www.flitwick.gov.uk

The Rufus Centre

Engagement Season is here!

It's no surprise to hear Christmas and New Year is the most popular time for engagements, followed, of course, by Valentine's Day.

Once you've said 'yes' to getting married the next big question is where!

At The Rufus Centre, we pride ourselves on offering options to suit all tastes and budgets. We are also licensed for both Civil Wedding and Partnership Ceremonies so you can have your official ceremony and wedding celebration together at one venue.

We offer a choice of three beautiful rooms for ceremonies. You can even choose to hold your ceremony outside in our Celebration Garden.



Weddings can be expensive and calculating all the costs involved a challenge. To help make budgeting easier we offer a fantastic inclusive Wedding Celebration Package for £6,395 which covers 50 day guests and up to 100 evening guests.



Everything is included from your choice of decorations to welcome drinks and a three-course meal plus finger buffet and disco in the evening. We can also accommodate additional guests for a charge per person.



If you would like to know more, please contact our Wedding Co-ordinator Louise who will be delighted to show you around.

Call **01525 631905** or email bookings@therufuscentre.co.uk

Wedding Package

EXCLUSIVE USE OF THE
LOCKYER SUITE

.....
Room Decorations including :

*Ceiling Canopy / Sparkle Curtain / Chair Covers & Sashes /
Table Centre Pieces / Ambient Lighting*

.....
WELCOME
DRINK

THREE COURSE
MEAL & GLASS
OF WINE

TOAST DRINK

.....
SILVER CAKE
KNIFE &
TABLE

WEDDING
GARDEN

DJ & DISCO
FOR
RECEPTION

.....
FINGER BUFFET FOR YOUR EVENING GUESTS

PRICES FROM £6,395

A complete package for 50 day guests and up to 100 evening guests

**Additional daytime guests £75pp, evening guests £20pp.
Ceremony room may be added to the package for an additional charge.*

*Call our wedding team to discuss on
01525 631905 or email
events@therufuscentre.co.uk*

Style

A TAYLOR SWIFT TRIBUTE

Saturday 3rd May

Show 1 3-5pm

Show 2 7-9pm

*Doors open 1 hour
before the Show!*

TICKETS: £20

THE RUFUS CENTRE
FLITWICK,
MK45 1AH

BOOK ONLINE
[THERUFUSCENTRE.TICKETSOLVE.COM](http://therufuscentre.ticketsolve.com)



**BEST DRESSED
COMPETITION**

**GLITTER
TATTOOS &
GLOW STICKS
INCLUDED IN
TICKET PRICE!**



*BOOKING FEE APPLIES



Organised by Flitwick Town Council

For more information: 01525 631900 or events@flitwick.gov.uk

X @NewsFTC [f /flitwickTC](https://www.facebook.com/flitwickTC) [i /flitwicktowncouncil](https://www.instagram.com/flitwicktowncouncil) www.flitwick.gov.uk